



\$200,000

MODERN LIVING WITH SCENIC VIEWS IN KÜÇÜKÇEKMECE

<https://sunsands-invest.com>

Searching for premium apartments Kucukcekmece Istanbul? This fast-growing lakeside district on Istanbul's European side has become one of the city's most sought-after residential destinations — combining [...]

- 2 beds
- 2 baths
- Apartment
- Buy to Rent, For sale, Investment Opportunities
- 14476 m²



agent2

Basics



Category: Buy to Rent, For sale, Investment Opportunities

Bathrooms: 2 baths

Total rooms: 3

Area: 14476 m²

Type: Apartment

Bedrooms: 2 beds

Floors: 12 floors

Year built: 2025

Overview

Why buy this property: Located in one of the most vibrant areas on the European side of Istanbul, this residential development combines modern architecture, high-quality construction, and stunning views of the **Sea of Marmara** and **Küçükçekmece Lake**, offering a comfortable and secure lifestyle for families.

Building Details

Garage spaces: 1

Amenities & Facilities

Facilities: Balcony, Elevator, Fire alarm, Terrace

Floor Plans



TİPA 2+1

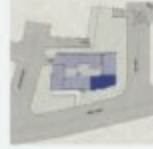


SİPŞA EİSAS NET ALAN / Gross Area: 135,74 m²
 SİPŞA EİSAS NET ALAN / Gross Area: 82,46 m²
 İKİLLİLİK ALAN / Gross Area: 71,28 m²

1. KAMER (Living Room)	32,27 m ²
2. KAMER (Bedroom)	23,40 m ²
3. KAMER (Bedroom)	22,87 m ²
4. MÜHÜR (Hall)	4,17 m ²
5. MÜHÜR (Bathroom)	5,17 m ²
6. MÜHÜR (Kitchen)	20,77 m ²
7. MÜHÜR (Balcony)	4,80 m ²
8. MÜHÜR (Terrace)	2,80 m ²

NOT: MÜHÜR ALANLARI İÇERİSİNDEKİ KAPILAR VE DİĞER AYRANICI ELEMANLAR İÇERİLMEZ.
 MÜHÜR ALANLARI İÇERİSİNDEKİ AYRANICI ELEMANLAR İÇERİLMEZ.

TİP B 3+1



SİPŞA EİSAS NET ALAN / Gross Area: 139,55 m²
 SİPŞA EİSAS NET ALAN / Gross Area: 83,25 m²
 İKİLLİLİK ALAN / Gross Area: 71,28 m²

1. KAMER (Living Room)	32,27 m ²
2. KAMER (Bedroom)	23,40 m ²
3. KAMER (Bedroom)	22,87 m ²
4. MÜHÜR (Hall)	4,17 m ²
5. MÜHÜR (Bathroom)	5,17 m ²
6. MÜHÜR (Kitchen)	20,77 m ²
7. MÜHÜR (Balcony)	4,80 m ²
8. MÜHÜR (Terrace)	2,80 m ²

NOT: MÜHÜR ALANLARI İÇERİSİNDEKİ KAPILAR VE DİĞER AYRANICI ELEMANLAR İÇERİLMEZ.
 MÜHÜR ALANLARI İÇERİSİNDEKİ AYRANICI ELEMANLAR İÇERİLMEZ.

